

**ANTI-SLIP TACTILE SURFACE**

**PAD**

- RESIN PAD
- POLYMER PAD
- MINERAL PAD
- ALUMINIUM PAD

**STUD**

- ANTIQUÉ STEEL STUD
- STAINLESS STEEL STUD
- STAINLESS STEEL DOME

**ANTI-SLIP STAIR NOSING**

**ANTI-SLIP SURFACE  
ALUMINIUM PROFILE**

- FLAT PROFILE WITH INSERT
- SQUARE PROFILE WITH INSERT**
- INSERT PROFILE WITH INSERT
- COMBO PROFILE WITH INSERT
- TILING PROFILE WITH INSERT

**RISER**

**ADHESIVE SURFACE  
ALUMINIUM PROFILE**

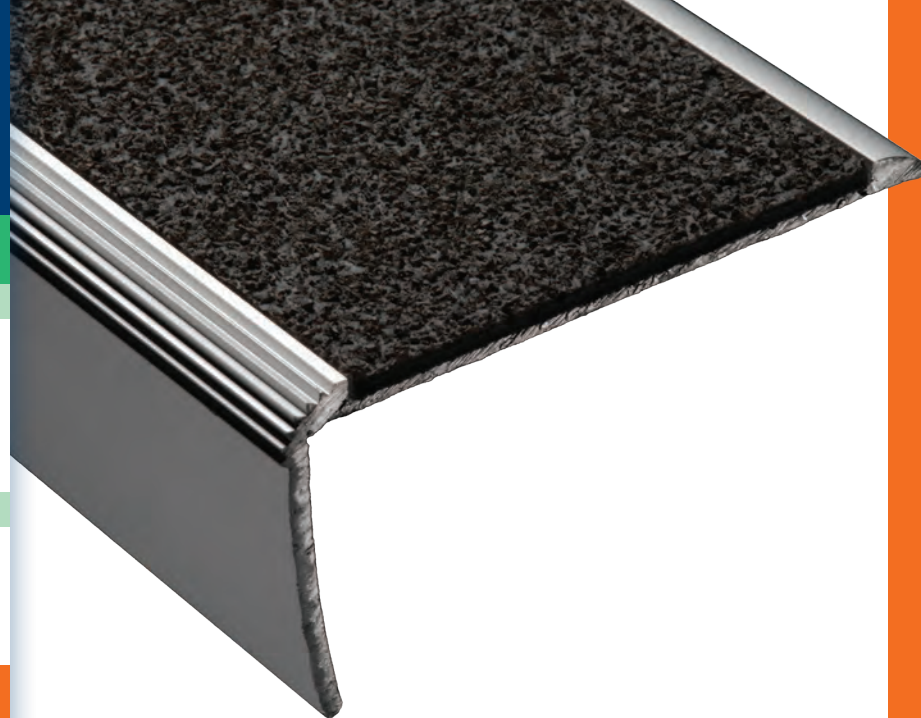
- PAINTED FLAT PROFILE
- POLYMER INSERTED FLAT PROFILE

**ANTI-SLIP GUIDING LINE**

**PAD**

- RESIN PAD
- POLYMER PAD
- MINERAL PAD

**POLYMER INSERTED  
ALUMINIUM PROFILE**



**ALUMINIUM POLYMER SQUARE PROFILE WITH INSERT NC3AP / NC5AP**

**PRODUCT BENEFITS**

The PROOPLE square profile aluminium and polymer stair nosing is UV and weather resistant. It is very resistant to high traffic and slipping on wet surfaces, and is recommended for stairs in establishments receiving the public (Category 1) and for roadways. Its L-shape and its grooved edge reinforces its resistance to deformation and its anti-slipping properties. The contrasted anti-slip surface in widths of either 3 cm or 5 cm hides the screws when installed.

08/12/2014 REGULATION  
ALUMINIUM POLYMER  
UV RESISTANT  
REACH COMPLIANT  
3 CM OR 5 CM WIDTHS

INDOOR / OUTDOOR  
HIGH TRAFFIC  
HIGH RESISTANCE TO SLIPPING  
RAPID SURFACE AVAILABILITY FOR TRAFFIC

**PROOPLE RECOMMENDATION**

The anti-slip polymer band comes from PROOPLE's nautical experience, and is non-abrasive, for barefoot traffic. It is easily and economically replaced. We recommend it for humid environments.

**METHODS OF INSTALLATION**

**Installed using screws**

- All stairway materials
- Immediately available for traffic

Please refer to our installation instructions.

**PERFORMANCE TESTING\***



**Resistance to slipping**

Tread SRT test > 0.40  
AFPV test of dome > 0.45



**Resistance to fire and smoke**

Fire - Smoke test: Bfl-s1

COMPLIANT

Tests carried out by the following French laboratories :

**GINGER CEBTP  
CEREMA  
LNE**

\*REGULATION | Decrees of 8 December 2014 and 15 January 2007.

## ANTI-SLIP TACTILE SURFACE

### PAD

RESIN PAD  
POLYMER PAD  
MINERAL PAD  
ALUMINIUM PAD

### STUD

ANTIQUÉ STEEL STUD  
STAINLESS STEEL STUD  
STAINLESS STEEL DOME

## ANTI-SLIP STAIR NOSING

### ANTI-SLIP SURFACE ALUMINIUM PROFILE

FLAT PROFILE WITH INSERT  
**SQUARE PROFILE WITH INSERT**  
INSERT PROFILE WITH INSERT  
COMBO PROFILE WITH INSERT  
TILING PROFILE WITH INSERT

### RISER

ADHESIVE SURFACE  
ALUMINIUM PROFILE

PAINTED FLAT PROFILE  
POLYMER INSERTED FLAT PROFILE

## ANTI-SLIP GUIDING LINE

### PAD

RESIN PAD  
POLYMER PAD  
MINERAL PAD

POLYMER INSERTED  
ALUMINIUM PROFILE

## DIMENSIONS

### NC3AP:

- 1150 x 30 mm
- 1500 x 30 mm
- 2300 x 30 mm

### NC5AP:

- 1150 x 50 mm
- 1500 x 50 mm
- 2300 x 50 mm

## COLOURS

IVORY	AGATE GREY
MELON YELLOW	GREY TINT
CARMINE RED	PALE BROWN
OXYDE RED*	WHITE
TRAFFIC BLUE	BLACK
SIGNAL GREEN	

\* COLOURS AVAILABLE IN SEPTEMBER 2017

## PACKAGING

Packaging < 15 Kg

NUMBER OF PRODUCTS	NC3AP	NC5AP
PACK	30	50
EACH	10	10
	2	2

## CONDITIONS FOR STORAGE AND USE

Store in original packaging, in a dry area.  
Install at between +5°C and +30°C.

## MAINTENANCE

Clean with water and regular cleaning products with a soft brush.

## TECHNICAL DIAGRAM

